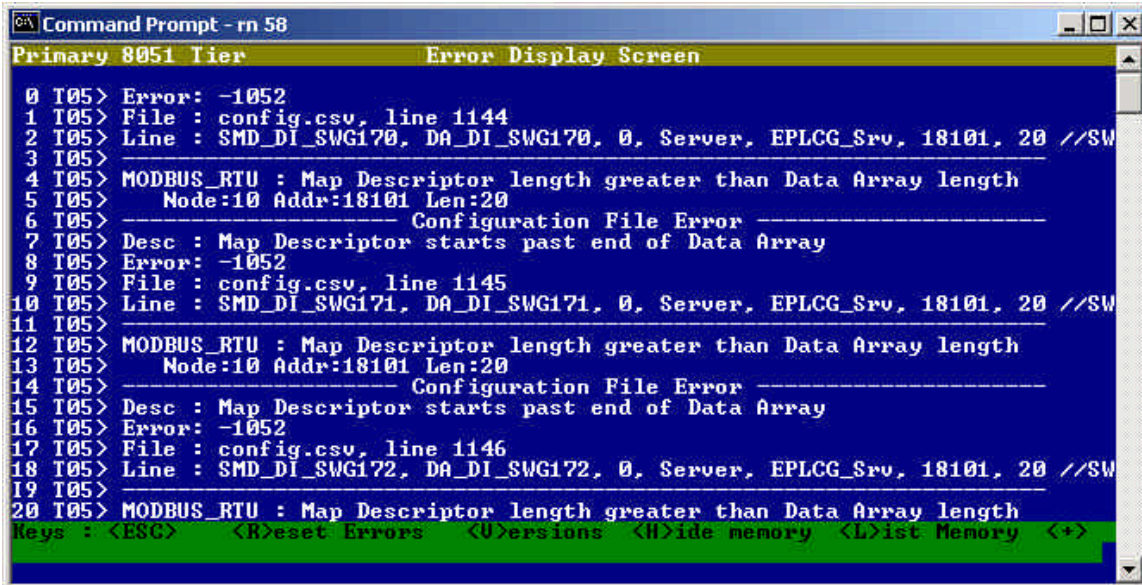


Interpreting FieldServer Configuration File Error Messages

When a bad configuration file is downloaded on the FieldServer, it is possible to find out the configuration errors which caused the Config error LED on the FieldServer to switch on.

Let's consider an example,

1. A configuration file with errors is downloaded on the FieldServer.
2. The Config error light on the FieldServer switches red.
3. Go to the system error screen of the FieldServer to check the error messages.
4. Lets assume the System Error screen appears as figure below:



```

Command Prompt - rn 58
Primary 8051 Tier      Error Display Screen
0 T05> Error: -1052
1 T05> File : config.csv, line 1144
2 T05> Line : SMD_DI_SWG170, DA_DI_SWG170, 0, Server, EPLCG_Srv, 18101, 20 //SW
3 T05>
4 T05> MODBUS_RTU : Map Descriptor length greater than Data Array length
5 T05>   Node:10 Addr:18101 Len:20
6 T05> ----- Configuration File Error -----
7 T05> Desc : Map Descriptor starts past end of Data Array
8 T05> Error: -1052
9 T05> File : config.csv, line 1145
10 T05> Line : SMD_DI_SWG171, DA_DI_SWG171, 0, Server, EPLCG_Srv, 18101, 20 //SW
11 T05>
12 T05> MODBUS_RTU : Map Descriptor length greater than Data Array length
13 T05>   Node:10 Addr:18101 Len:20
14 T05> ----- Configuration File Error -----
15 T05> Desc : Map Descriptor starts past end of Data Array
16 T05> Error: -1052
17 T05> File : config.csv, line 1146
18 T05> Line : SMD_DI_SWG172, DA_DI_SWG172, 0, Server, EPLCG_Srv, 18101, 20 //SW
19 T05>
20 T05> MODBUS_RTU : Map Descriptor length greater than Data Array length
Keys : <ESC>  <R>reset Errors  <U>ersions  <H>ide memory  <L>ist Memory  <+>
    
```

To debug the configuration file, proceed as follows:

The line number of the configuration file which caused the error can be seen,

```

T05>-----Configuration File Error-----
T05>Desc: Map Descriptor starts past end of Data Array
T05>Error: -1052
T05>File config.csv, line 1145
T05>Line: SMD_DI_SWG170, DA_DISWG170, 0, Server,EPLCG_Srv,18101,20
T05>-----
    
```

Read the description of the error that is,

```

Desc: Map Descriptors starts past end of Data Array
    
```

Now we should look at the line where the data array SMD_DI_SWG170 is defined in the configuration file, that is,

Data_Array_Name,	Data_Format,	Data_Array_Length
DA_DI_SWG170,	Bit,	05

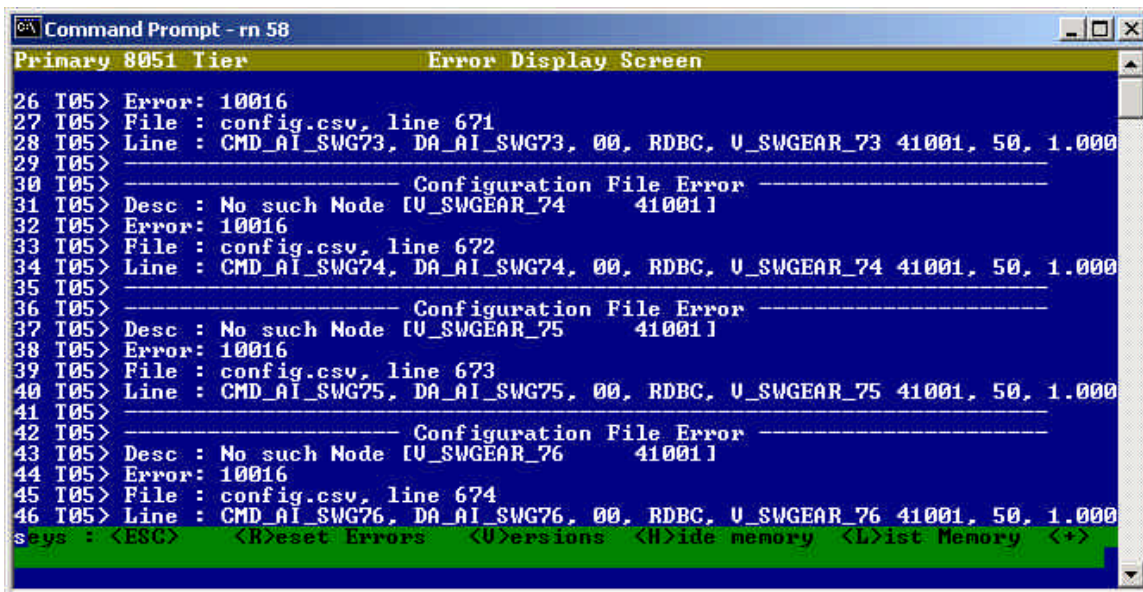
We can see that data array length is defined as 5 whereas on line 1145 of the configuration its length is 20.

Hence in order to get rid of the error we need to increase the length of the data array from 05 to atleast 20. So now that line appears as :

Data_Array_Name,	Data_Format,	Data_Array_Length
DA_DI_SWG170,	Bit,	20

Similarly, from the system error screen all the errors can be tracked and resolved.

Now if the System error screen appears this way,



Looking at the Error Screen it can be concluded that another configuration file error is present. The approach to the problem is the same.

To debug the configuration file, proceed as follows:

The Error Screen shows

```
T05>-----Configuration File Error-----
T05> Desc: No such Node [V_SWGEAR_74          41001]
T05>Error 10016
T05>File: config.csv, line 672
T05>Line CMD_AI_SWG74,DA_AI_SWG74,00,RDBC,V_SWGEAR_74 41001,
T05>-----
```

Read the Description of the Error, that is,

```
Desc: No such Node[V_SWGEAR_74          41001]
```

From this line in the Error Screen we can see that no comma has been specified after V_SWGEAR_74 and hence we got the panic.

```
CMD_AI_SWG74,DA_AI_SWG74,00,RDBC,V_SWGEAR_74 41001,50,
```

Hence correct the line 672 of the configuration file.

Note: The Screen shots of the System Error Screen above show more than one errors similar type ,only one of each type is explained in detail here.